



SGM7229X

High-Speed USB 2.0 (480Mbps) DPDT Analog Switch

GENERAL DESCRIPTION

The SGM7229X is a DPDT (double-pole/double-throw) analog switch. It operates from a 1.8V to 5.5V single power supply. Each switch of the SGM7229X is bidirectional, which can ensure that the high speed signals have little or no attenuation at the outputs.

Other features include high speed, low bit-to-bit skew and wide bandwidth. These high performances make it very suitable for multiple applications, such as cellular phones and computer peripherals, etc.

The SGM7229X has power-off and power-on protections. Because of the special circuitry on the D+/D- pins, the device will not be damaged even if V_{BUS} short-circuit occurs during data transmission. In addition, it can prevent accidental from leaking and ensure system reliability under power-down and over-voltage conditions.

The SGM7229X is available in Green MSOP-10 and UTQFN-1.8×1.4-10L packages. It operates over an ambient temperature range of -40°C to +125°C.

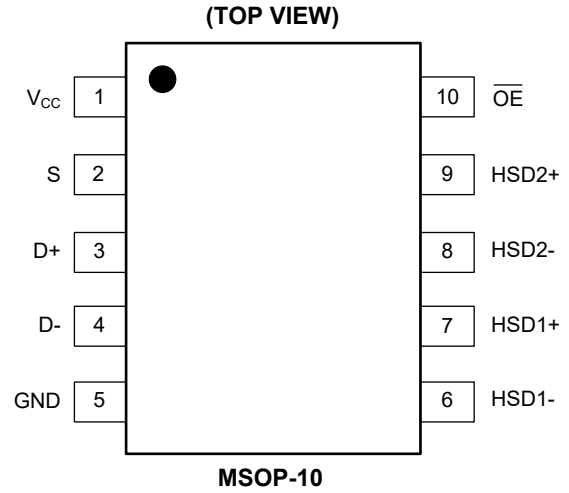
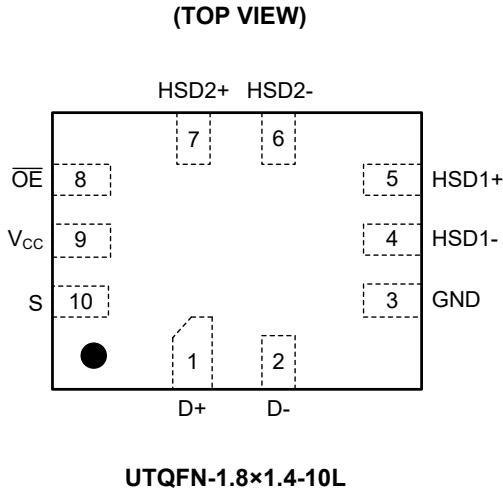
FEATURES

- **Single Supply Voltage Range: 1.8V to 5.5V**
- **On-Resistance: 6Ω (TYP) at 3V**
- **High Off-Isolation: -26dB ($R_L = 50\Omega$, $f = 250\text{MHz}$)**
- **Low Crosstalk: -20dB ($R_L = 50\Omega$, $f = 250\text{MHz}$)**
- **-3dB Bandwidth: 850MHz**
- **Fast Switching Times at $V_{CC} = 3.3V$:**
 - $t_{ON} = 30\text{ns}$
 - $t_{OFF} = 18\text{ns}$
- **Break-Before-Make Switching**
- **Rail-to-Rail Input and Output Operation**
- **Power-Off and Power-On Protections**
- **-40°C to +125°C Operating Temperature Range**
- **Available in Green UTQFN-1.8×1.4-10L and MSOP-10 Packages**

APPLICATIONS

Cellular Phones
Digital Cameras
Portable Equipment
Computer Peripherals
Battery-Powered Systems
Routes Signals for USB 2.0 Full-Speed

PIN CONFIGURATIONS

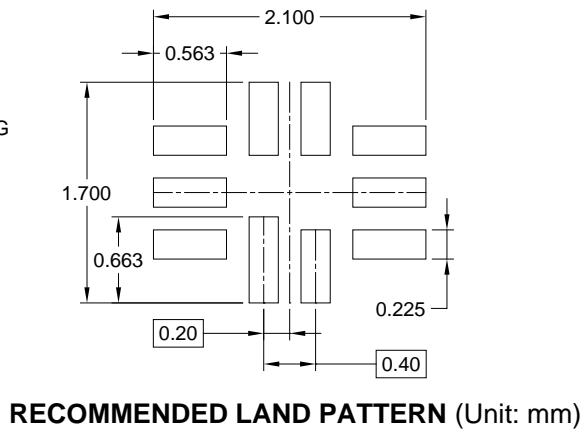
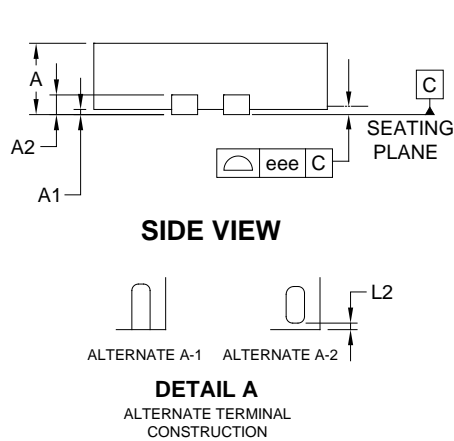
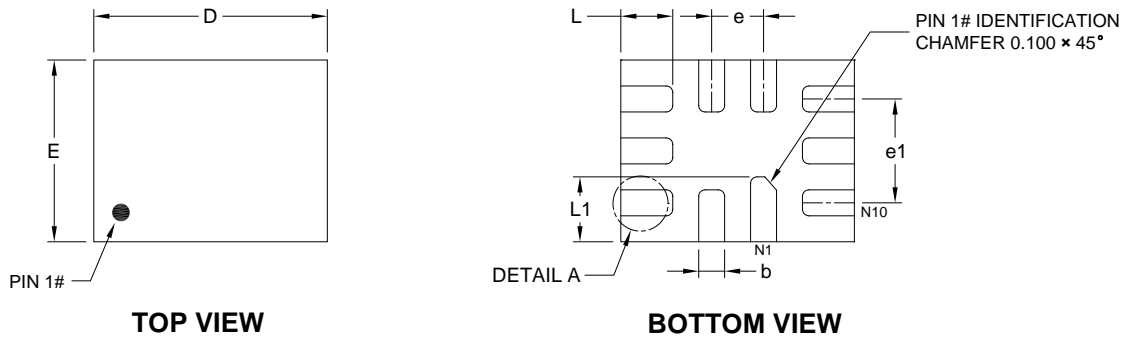


PIN DESCRIPTION

PIN		NAME	FUNCTION
UTQFN-1.8x1.4-10L	MSOP-10		
1	3	D+	USB Data Bus.
2	4	D-	USB Data Bus.
3	5	GND	Ground.
4	6	HSD1-	Multiplexed Source Input.
5	7	HSD1+	Multiplexed Source Input.
6	8	HSD2-	Multiplexed Source Input.
7	9	HSD2+	Multiplexed Source Input.
8	10	$\overline{\text{OE}}$	Output Enable Control Pin.
9	1	V _{CC}	Positive Power Supply Pin.
10	2	S	Select Input Pin.

PACKAGE OUTLINE DIMENSIONS

UTQFN-1.8x1.4-10L

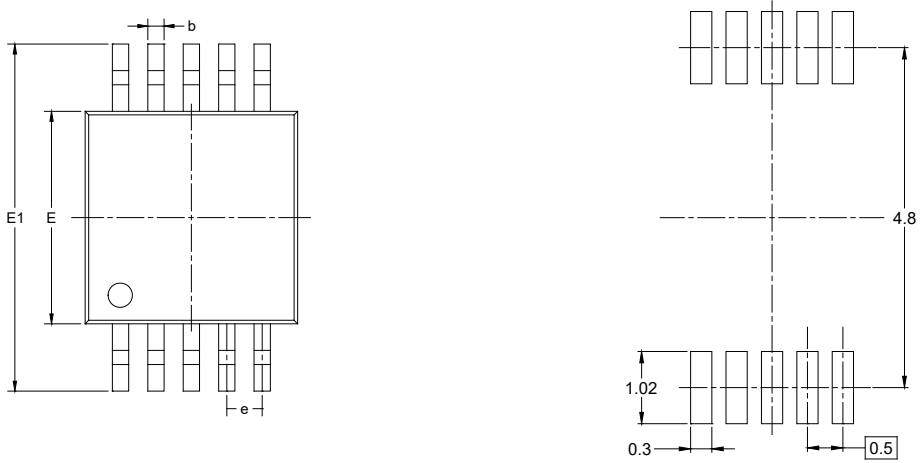


Symbol	Dimensions In Millimeters		
	MIN	MOD	MAX
A	0.450	-	0.600
A1	0.000	-	0.050
A2	0.152 REF		
b	0.150	0.200	0.250
D	1.750	1.800	1.850
E	1.350	1.400	1.450
e	0.400 TYP		
e1	0.800 REF		
L	0.350	0.400	0.450
L1	0.450	0.500	0.550
L2	0.000	-	0.100
eee	-	0.080	-

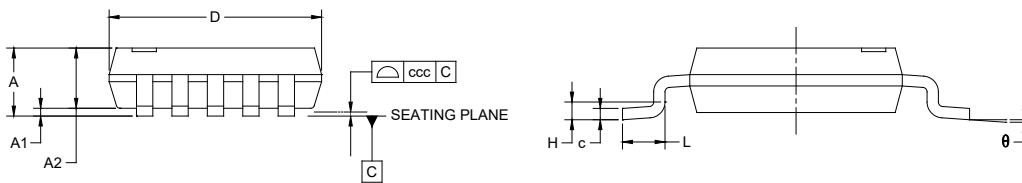
NOTE: This drawing is subject to change without notice.

PACKAGE OUTLINE DIMENSIONS

MSOP-10



RECOMMENDED LAND PATTERN (Unit: mm)



Symbol	Dimensions In Millimeters		
	MIN	MOD	MAX
A	-	-	1.100
A1	0.000	-	0.150
A2	0.750	-	0.950
b	0.170	-	0.330
c	0.080	-	0.230
D	2.900	-	3.100
E	2.900	-	3.100
E1	4.750	-	5.050
e	0.500 BSC		
H	0.250 TYP		
L	0.400	-	0.800
θ	0°	-	8°
ccc	0.100		

NOTES:

1. This drawing is subject to change without notice.
2. The dimensions do not include mold flashes, protrusions or gate burrs.
3. Reference JEDEC MO-187.

TAPE AND REEL INFORMATION

REEL DIMENSIONS



TAPE DIMENSIONS



NOTE: The picture is only for reference. Please make the object as the standard.

KEY PARAMETER LIST OF TAPE AND REEL

Package Type	Reel Diameter	Reel Width W1 (mm)	A0 (mm)	B0 (mm)	K0 (mm)	P0 (mm)	P1 (mm)	P2 (mm)	W (mm)	Pin1 Quadrant
UTQFN-1.8×1.4-10L	7"	9.0	1.75	2.10	0.7	4.0	4.0	2.0	8.0	Q1
MSOP-10	13"	12.4	5.20	3.30	1.50	4.0	8.0	2.0	12.0	Q1

DD0001

PACKAGE INFORMATION

CARTON BOX DIMENSIONS



NOTE: The picture is only for reference. Please make the object as the standard.

KEY PARAMETER LIST OF CARTON BOX

Reel Type	Length (mm)	Width (mm)	Height (mm)	Pizza/Carton
7" (Option)	368	227	224	8
7"	442	410	224	18
13"	386	280	370	5

DD0002