



# 74AVC8T245Q

## 8-Bit Dual-Supply Translating Transceiver with Configurable Voltage Translation and 3-State Outputs

### GENERAL DESCRIPTION

The 74AVC8T245Q is an 8-bit, dual-supply bus transceiver with configurable voltage translation. The An and Bn are 8-bit data input-output ports. DIR is the direction control input and  $\overline{OE}$  is the output enable input.  $V_{CCA}$  and  $V_{CCB}$  are dual supply pins. The supply voltage of  $V_{CCA}$  and  $V_{CCB}$  can range from 0.8V to 3.6V, making the device suitable for bidirectional translating among any of the 0.8V, 1.2V, 1.5V, 1.8V, 2.5V and 3.3V voltage nodes. The An, DIR and  $\overline{OE}$  signals are referenced to  $V_{CCA}$  and Bn signals are referenced to  $V_{CCB}$ .

When DIR is set high, it allows transmission from An to Bn. When DIR is set low, it allows transmission from Bn to An.  $\overline{OE}$  can be used to make the outputs disabled so that the buses are effectively isolated. In suspend mode, both An and Bn are in high-impedance state when either  $V_{CCA}$  or  $V_{CCB}$  input is at GND level.

This device is highly suitable for partial power-down applications by using power-off leakage current ( $I_{OFF}$ ) circuit. When the device is powered down, the outputs are disabled, and the current backflow can be prevented from passing through the device.

This device is AEC-Q100 qualified (Automotive Electronics Council Standard Q100 Grade 1) and the use of this device is suitable for automotive applications.

### FEATURES

- **AEC-Q100 Qualified for Automotive Applications Device Temperature Grade 1**  
 $T_A = -40^{\circ}\text{C}$  to  $+125^{\circ}\text{C}$
- **$V_{CCA}$  Supply Voltage Range: 0.8V to 3.6V**
- **$V_{CCB}$  Supply Voltage Range: 0.8V to 3.6V**
- **Inputs Accept Voltages up to 3.6V**
- **+12mA/-12mA Output Current**
- **Data Rates:**
  - ◆ **380Mbps ( $\geq 1.8\text{V}$  to  $3.3\text{V}$  Translation)**
  - ◆ **260Mbps ( $\geq 1.1\text{V}$  to  $3.3\text{V}$  Translation)**
  - ◆ **260Mbps ( $\geq 1.1\text{V}$  to  $2.5\text{V}$  Translation)**
  - ◆ **210Mbps ( $\geq 1.1\text{V}$  to  $1.8\text{V}$  Translation)**
  - ◆ **150Mbps ( $\geq 1.1\text{V}$  to  $1.5\text{V}$  Translation)**
  - ◆ **100Mbps ( $\geq 1.1\text{V}$  to  $1.2\text{V}$  Translation)**
- **Outputs in High-Impedance State when  $V_{CCA}$  or  $V_{CCB} = 0\text{V}$**
- **$-40^{\circ}\text{C}$  to  $+125^{\circ}\text{C}$  Operating Temperature Range**
- **Available in a Green TQFN-3.5x5.5-24AL Package**

### APPLICATIONS

Automotive Applications  
Personal Electronic Devices  
Enterprise Infrastructures  
Telecom Equipment

# 8-Bit Dual-Supply Translating Transceiver with 74AVC8T245Q Configurable Voltage Translation and 3-State Outputs

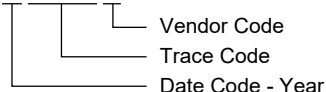
## PACKAGE/ORDERING INFORMATION

MODEL	PACKAGE DESCRIPTION	SPECIFIED TEMPERATURE RANGE	ORDERING NUMBER	PACKAGE MARKING	PACKING OPTION
74AVC8T245Q	TQFN-3.5x5.5-24AL	-40°C to +125°C	74AVC8T245QTSO24G/TR	06J TSO XXXXX	Tape and Reel, 3000

## MARKING INFORMATION

NOTE: XXXXX = Date Code, Trace Code and Vendor Code.

**XXXXX**



Green (RoHS & HSF): SG Micro Corp defines "Green" to mean Pb-Free (RoHS compatible) and free of halogen substances. If you have additional comments or questions, please contact your SGMICRO representative directly.

## ABSOLUTE MAXIMUM RATINGS <sup>(1)</sup>

Supply Voltage Range, $V_{CCA}$ .....	-0.5V to 4.6V
Supply Voltage Range, $V_{CCB}$ .....	-0.5V to 4.6V
Input Voltage Range, $V_I$ <sup>(2)</sup> .....	-0.5V to 4.6V
Output Voltage Range, $V_O$ <sup>(2)</sup>	
Suspend or 3-State Mode .....	-0.5V to 4.6V
Active Mode	
A Ports .....	-0.5V to MIN(4.6V, $V_{CCA} + 0.5V$ )
B Ports .....	-0.5V to MIN(4.6V, $V_{CCB} + 0.5V$ )
Input Clamp Current, $I_{IK}$ ( $V_I < 0V$ ) .....	-50mA
Output Clamp Current, $I_{OK}$ ( $V_O < 0V$ ) .....	-50mA
Continuous Output Current, $I_O$ .....	$\pm 50mA$
Continuous Current through $V_{CCA/B}$ or GND.....	$\pm 100mA$
Junction Temperature <sup>(3)</sup> .....	+150°C
Storage Temperature Range .....	-65°C to +150°C
Lead Temperature (Soldering, 10s).....	+260°C
ESD Susceptibility	
HBM.....	7000V
CDM .....	1000V

## RECOMMENDED OPERATING CONDITIONS

Supply Voltage Range, $V_{CCA}$ .....	0.8V to 3.6V
Supply Voltage Range, $V_{CCB}$ .....	0.8V to 3.6V
Input Voltage Range, $V_I$ .....	0V to 3.6V
Output Voltage Range, $V_O$	
Suspend or 3-State Mode .....	0V to 3.6V
Active Mode	
A Ports .....	0V to $V_{CCA}$
B Ports .....	0V to $V_{CCB}$
High-State or Low-State Output Current, $I_O$ .....	$\pm 12mA$
Input Transition Rise or Fall Rate, $\Delta t/\Delta V$	
$V_{CCI} = 0.8V$ to 3.6V.....	5ns/V (MAX)
Operating Temperature Range .....	-40°C to +125°C

## OVERSTRESS CAUTION

1. Stresses beyond those listed in Absolute Maximum Ratings may cause permanent damage to the device. Exposure to absolute maximum rating conditions for extended periods may affect reliability. Functional operation of the device at any conditions beyond those indicated in the Recommended Operating Conditions section is not implied.
2. The input and output voltage ratings may be exceeded if the input and output clamp current ratings are observed.
3. The performance capability of a high-performance integrated circuit in conjunction with its thermal environment can create junction temperatures which are detrimental to reliability.

## ESD SENSITIVITY CAUTION

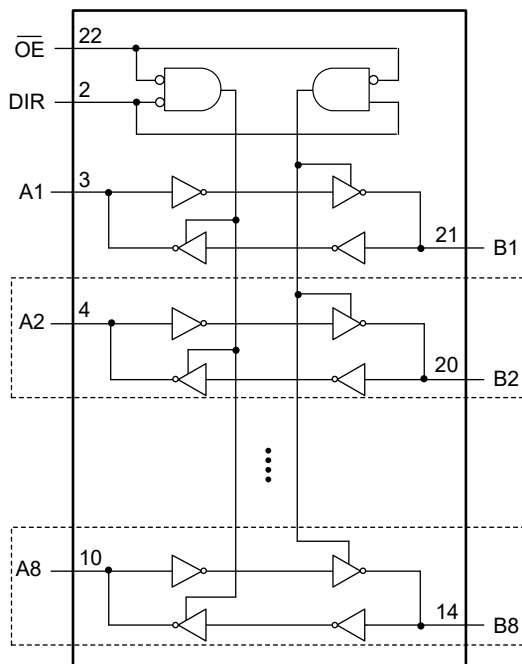
This integrated circuit can be damaged if ESD protections are not considered carefully. SGMICRO recommends that all integrated circuits be handled with appropriate precautions. Failure to observe proper handling and installation procedures can cause damage. ESD damage can range from subtle performance degradation to complete device failure. Precision integrated circuits may be more susceptible to damage because even small parametric changes could cause the device not to meet the published specifications.

## DISCLAIMER

SG Micro Corp reserves the right to make any change in circuit design, or specifications without prior notice.

# 8-Bit Dual-Supply Translating Transceiver with 74AVC8T245Q Configurable Voltage Translation and 3-State Outputs

## LOGIC DIAGRAM



## FUNCTION TABLE

SUPPLY VOLTAGE	CONTROL INPUT		INPUT/OUTPUT	
$V_{CCA}, V_{CCB}^{(1)}$	$\overline{OE}$	DIR	An	Bn
0.8V to 3.6V	L	L	An = Bn	Inputs
0.8V to 3.6V	L	H	Inputs	Bn = An
0.8V to 3.6V	H	X	Z	Z
GND <sup>(2)</sup>	X	X	Z	Z

H = High Voltage Level  
L = Low Voltage Level  
Z = High-Impedance State  
X = Don't Care

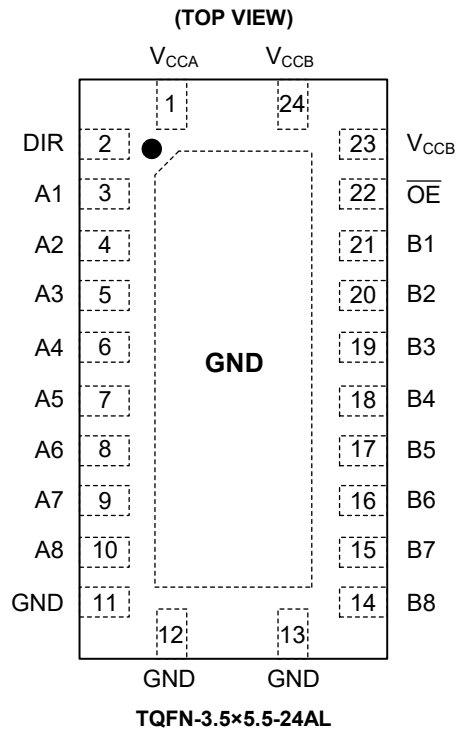
NOTES:

- The An, DIR and  $\overline{OE}$  signals are referenced to  $V_{CCA}$ . The Bn signals are referenced to  $V_{CCB}$ .
- If at least one of  $V_{CCA}$  or  $V_{CCB}$  is at GND level, the device enters suspend mode.

# 8-Bit Dual-Supply Translating Transceiver with Configurable Voltage Translation and 3-State Outputs

## 74AVC8T245Q

### PIN CONFIGURATION

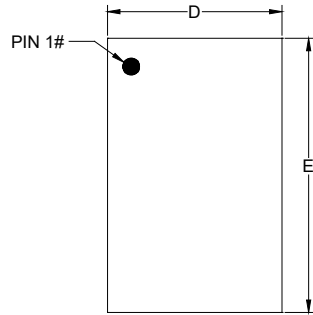


### PIN DESCRIPTION

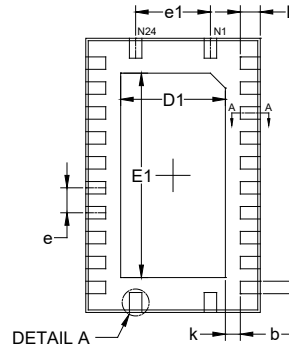
PIN	NAME	FUNCTION
1	$V_{CCA}$	Supply Voltage $V_{CCA}$ . The An, DIR and $\overline{OE}$ signals are referenced to $V_{CCA}$ .
2	DIR	Direction Control Input.
3, 4, 5, 6, 7, 8, 9, 10	A1, A2, A3, A4, A5, A6, A7, A8	Data Inputs/Outputs.
11, 12, 13	GND	Ground.
14, 15, 16, 17, 18, 19, 20, 21	B8, B7, B6, B5, B4, B3, B2, B1	Data Inputs/Outputs.
22	$\overline{OE}$	Output Enable Input (Active Low).
23, 24	$V_{CCB}$	Supply Voltage $V_{CCB}$ . The Bn signals are referenced to $V_{CCB}$ .
Exposed Pad	GND	Connect it to GND internally. This pad is not an electrical connection point.

PACKAGE OUTLINE DIMENSIONS

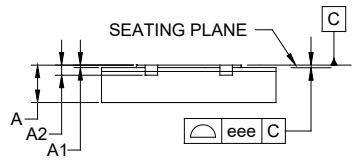
TQFN-3.5x5.5-24AL



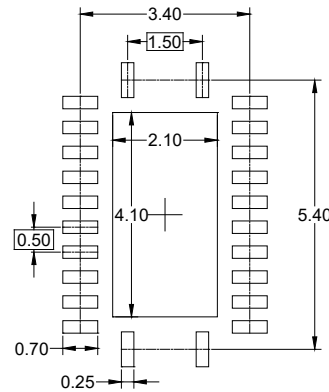
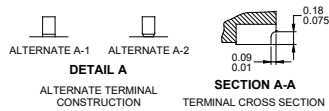
TOP VIEW



BOTTOM VIEW



SIDE VIEW



RECOMMENDED LAND PATTERN (Unit: mm)

Symbol	Dimensions In Millimeters		
	MIN	MOD	MAX
A	0.700	-	0.800
A1	0.000	-	0.050
A2	0.203 REF		
b	0.200	-	0.300
D	3.400	-	3.600
E	5.400	-	5.600
D1	2.000	-	2.200
E1	4.000	-	4.200
e	0.500 BSC		
e1	1.500 BSC		
L	0.300	-	0.500
k	0.300 REF		
eee	0.080		

NOTE: This drawing is subject to change without notice.

## TAPE AND REEL INFORMATION

### REEL DIMENSIONS



### TAPE DIMENSIONS



NOTE: The picture is only for reference. Please make the object as the standard.

### KEY PARAMETER LIST OF TAPE AND REEL

Package Type	Reel Diameter	Reel Width W1 (mm)	A0 (mm)	B0 (mm)	K0 (mm)	P0 (mm)	P1 (mm)	P2 (mm)	W (mm)	Pin1 Quadrant
TQFN-3.5×5.5-24AL	13"	12.4	3.80	5.80	1.00	4.0	8.0	2.0	12.0	Q1

000001

# PACKAGE INFORMATION

## CARTON BOX DIMENSIONS



NOTE: The picture is only for reference. Please make the object as the standard.

## KEY PARAMETER LIST OF CARTON BOX

Reel Type	Length (mm)	Width (mm)	Height (mm)	Pizza/Carton
13"	386	280	370	5

DD0002